



**msu**  
management &  
science university

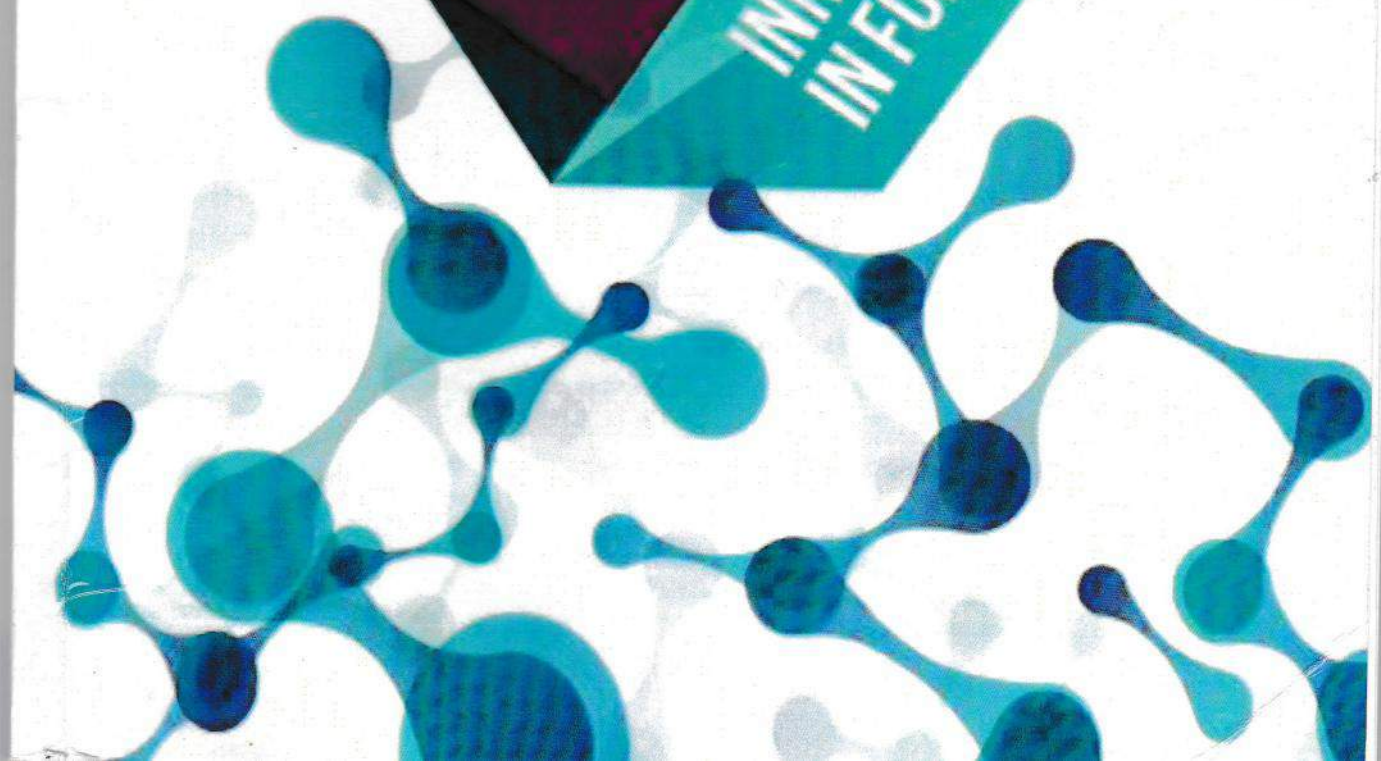


**1**<sup>st</sup> International Conference on  
Forensic Science, Forensic Medicine  
& Criminology

**msu  
infomec  
2016**

**19 - 20 APRIL 2016**  
venue:  
Management & Science University (MSU)  
Shah Alam, Selangor, Malaysia

**INNOVATIONS  
IN FORENSICS**





		Page
26	<b>Awareness and Knowledge about Bioterrorism among Medical Students</b> <i>Bikram Kabir, Durgadas Govind Naik, Venkata Pavan Kumar and Geethanjali Bhas</i>	61
27	<b>An Exploratory Framework of Drug Related Crime in Forensic Sciences and Criminology</b> <i>Sujit Kumar Sarker and Erwin Martinez Faller</i>	62
28	<b>The Significance of Odontology in Forensic Science – A Silent Witness</b> <i>Jeevan Matada Basavarajaiah</i>	63
29	<b>Palatal rugoscopy among Sundanese and Malaysian Tamils: a study in Faculty of Dentistry University of Padjadjaran Indonesia</b> <i>Rahmadaniah Khaerunnisa, Murnisari Darjan, Ine Suhartina Hardjadinata</i>	64
30	<b>Description of the Gonial Angle Size in Male and Female from Lateral Cephalogram for Forensic Identification</b> <i>Fathin Vania Rahmadina, Moch. Rodian and Fahmi Oscandar</i>	65
31	<b>Description of Dental Caries in Skulls of Pawon Man</b> <i>Amalina Binti Ahmad, Dudi Aripin, Warta Dewi and Lutfi Yondri</i>	66
32	<b>Description of Occlusal Fissure Patterns on Molar Teeth of Pawon Man's Remains</b> <i>Natasha Carolina, Moch Rodian, Dudi Aripin and Lutfi Yondri</i>	67
33	<b>Description the Anteroposterior Frontalis Sinus Size Based on Chronological Age as Forensic Identification</b> <i>Georgiana Marsya, Inne Suherna Sasmita and Fahmi Oscandar</i>	68
34	<b>Description of Pawon-man's Maxillary and Mandibular Cortical Bone Thickness and Density with 3D Cone Beam Computed Tomography Imaging</b> <i>Wisam Rizqullah, Azhari, Lusi Epsilawati and Lutfi Yondri</i>	69
35	<b>Factors Affecting Insect Compositions and Developmental Patterns for Estimating Post Mortem Interval (PMI): A Review</b> <i>Nur Najwa Zulkiffi and Naji A. Mahat</i>	70

## Description of Occlusal Fissure Patterns on Molar Teeth of Pawon Man's Remains

<sup>1</sup>Natasha Carolina, <sup>2</sup>Moch Rodian, <sup>3</sup>Dudi Aripin and <sup>4</sup>Lutfi Yondri

<sup>1</sup>Faculty of Dentistry, <sup>1,2,3</sup>Forensic Odontology Science, Faculty of Dentistry, Padjadjaran University, <sup>4</sup>Bandung Archeology Association, <sup>1,2,3</sup>40132 Bandung, West Java, Indonesia, <sup>4</sup>40623 Bandung, West Java, Indonesia.

Observation of the occlusal fissure pattern and number of cusps have been extensively used to identify an individual and classify each individual to a specific racial group. Pawon man is prehistoric humans that lived in Pawon Cave which is located in the village of Mount Masigit, Cipatat district, Bandung regency. Pawon man was expected live around 9525-5660 BP and based on its physical characteristics, probably classified as Mongoloid race. The purpose of this research is to determine the occlusal fissure patterns of Pawon man's molar teeth. The research used a descriptive method and the sample was 5 skeletons of Pawon Man, which consisted of 31 molar teeth. Identification of the fissure pattern was done by direct visual study of the object, and then categorized the pattern and determined the percentage of dominant pattern. On maxillary molar teeth, the study showed the first molar with 4 pattern is 50%, second molar with 4- pattern is 40% and 4 pattern is 20%, and for the third molar with 3 pattern is 66% and 3+ pattern is 33%. Then for the mandibular molar teeth, first molar with Y4 pattern is 50% and +5 pattern is 25%, second molar with Y4 pattern is 28,5% and +5 is 28,5%, and for the third molar with Y5 pattern is 33,3% and 4 pattern is 16,7%. Some teeth cannot be identified because of the attrition on the occlusal surfaces. The conclusion of this research is for the upper molar, the dominant pattern of first molar is 4 pattern, second molar is 4- pattern, and third molar is 3 pattern. Then for the mandibular molar teeth, the dominant pattern of first molar is Y4 pattern, second molar is Y4 and +5 pattern, and third molar is Y5 pattern. Some of these patterns refer to the pattern of Mongoloid race.

**Keywords** : Occlusal Fissure Patten, Pawon Man, Molar Teeth