



# CLASS I MALOCCLUSION WITH OPEN BITE SKELETAL AND DENTAL AT CAUSA BAD HABIT 'TONGUE THRUST' (A CLINICAL CASE REPORT)



Imacullati Rini<sup>1</sup> Endah Mardiaty<sup>2</sup>

1. Orthodontic Resident, Dentistry Faculty of Padjadjaran University
2. Senior Lecturer in Orthodontic Department, Dentistry Faculty of Padjadjaran University

## Introduction

Class I malocclusion with mesial drifting, open bite anterior skeletal and dental, because tongue thrust. The treatment in this case with second premolar extraction.

## Case Report

21 years old female patient with class I dentoskeletal malocclusion, crowding in maxilla and mandibular, open bite anterior, midline maxillary shifting and tongue thrusting. SNA 79°, SNB 77°, Mandibular plane 32°, Wits 0 mm.

**Diagnosis:** Malocclusion class I dentoskeletal with open bite dental and skeletal, crowding, mesial drifting, straight profile, midline maxillary shifting to right, overbite (-5mm), mandibular high angle, Interincisal angle Downs&Steiner protrusion, I RA-bid AP protrusi, I RB NB protrusion&proposition, GoGn-SN clockwise

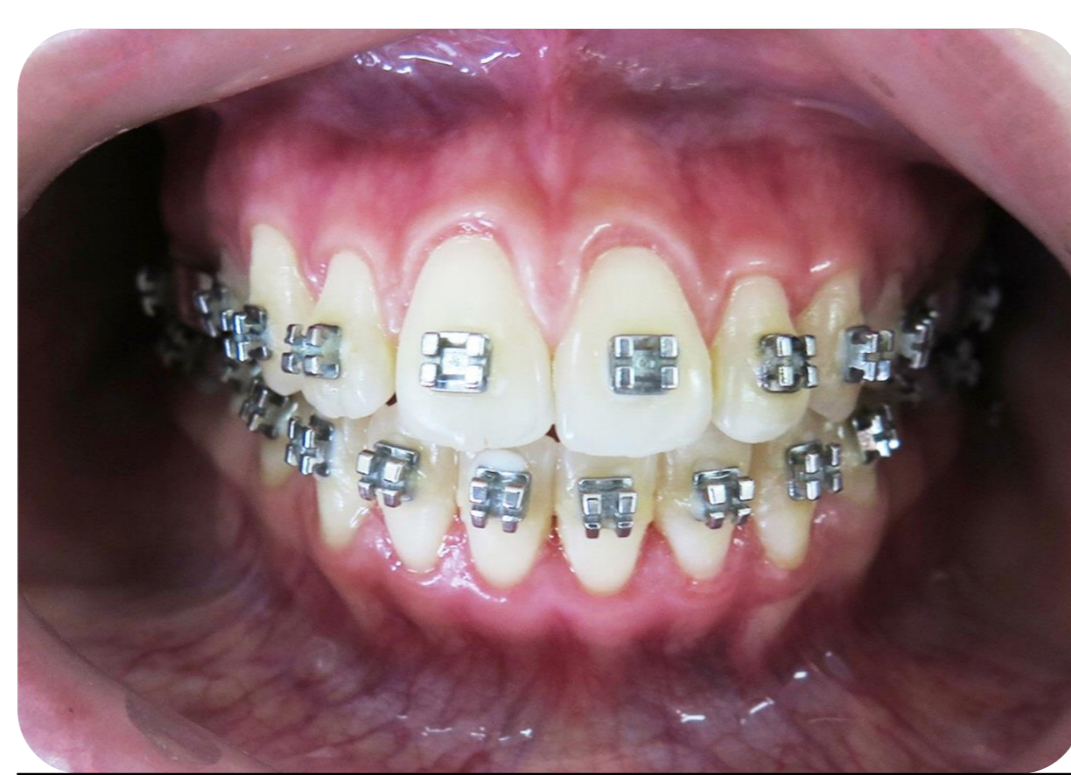
## Aim of Treatment

To correct the profile, anterior open bite using standard edgewise appliance.

## Treatment Progress



Before treatment



After 15 months treatment

### Treatment Procedures

1. Fixed appliance with Standard edgewise technique
2. Extraction 15
3. Levelling and alignment
4. Closing open bite with *elastic box*
5. *Artistic positioning*
6. *Occlusal adjustment*
7. Retention.

## Treatment Result



Anterior open bites successfully positioned into proper alignment

### RADIOGRAPHIC FINDINGS

	BEFORE	Interpretasi
<SNA °	79	Normal
<SNB °	77	Normal
<ANB °	2	Kelas I
I-NA mm	7,5	Proposisi
<I-NA °	39	Protrusi
I-NB mm	7	Proposisi
<I-NB °	35	Protrusi
<Pg-NB mm	1	
<I-I °	103,5	Protrusi
<OkI-SN°	23	Normal
<GoGn-SN°	44	Clockwise

### CEPHALOMETRIC



Before



Panoramic before treatment



## Discussion and Conclusions

Class I dentoskeletal malocclusion with open bite anterior can be treated with eliminate bad habit as etiology factor and combination orthodontic treatment.